

恒力弹簧 CONSTANT FORCE SPRING

热线: 400-008-3858



上海敏硕机电科技有限公司
Shanghai Mascot Industrial Co.,Ltd

目录

CONTENTS

公司介绍·····	01
Company Profile	
产品介绍·····	03
Product Introduce	
牵狗器弹簧·····	05
Dog Leash Spring	
窗帘弹簧·····	06
Curtain Spring	
升降弹簧·····	07
Lifting Spring	
安全带弹簧·····	08
Safety belt Spring	
推进器弹簧·····	09
Pusher Spring	
启动弹簧·····	10
Starter Spring	
重力大弹簧·····	11
Gravity Spring	
通用恒力弹簧·····	12
Universal constant force Spring	





公司简介 Company Profile

敏硕科技是一家中外合资具有研发、生产、销售综合实力于一体的各类精密弹簧、密封产品、制冷配件及单向阀系列等精密五金产品专业制造商。公司拥有四个分厂（江苏、上海、浙江、美国）及天津分公司，二万多平方米的标准厂房。公司创始人及研发技术骨干拥有欧美同行业丰富的管理及领先的技术经验。

公司现有员工598名，其中专业工程技术人员、管理人员268名，各种设备1000多台，形成了从产品研发、生产、销售到售后服务的完整现代化企业管理体系。公司通过IATF16949:2016质量体系等一系列技术认证，获得多项国家实用新型及发明专利。公司始终秉承“客户第一，质量至上”为宗旨，为客户提供全方位综合性弹簧、密封、制冷五金产品解决方案。我们承诺，无论您在何时何地，我们都将为您提供特殊需求的定制服务，专业、优质、安心、快捷、高效是我们十年如一日的服务宗旨。多年来，我们以诚信经营，踏实做产品，持续受到国内外客户的认可，业务遍布全球各地。

Mascot industrial group is a Sino foreign joint venture with comprehensive strength of R & D, production and sales. We are a professional manufacturer of all kinds of precision springs and seal ring, refrigeration accessories and check valve series and other precision hardware products. We have four branches (Jiangsu, Shanghai, Zhejiang, Dallas) and Tianjin Branch, more than 20000 square meters of standard workshop. As well as, We have 598 employees, including 268 professional engineering and technical personnel and management personnel, and more than 1000 sets of various equipment. The founder and R & D technical backbone of the company have rich management and technical experience in the same industry in Europe and America. It has formed a complete modern enterprise management system with product development, production, sales to after-sales service. The company has passed a series of quality technology certification such as IATF 16949:2016 quality system, and obtained a number of national utility model and invention patents. The company always adheres to the tenet of "customer first, quality first" to provide customers with comprehensive spring, seal ring, refrigeration hardware products solutions. We promise that no matter when and where you are, we will provide you with customized services with special needs. Our ten-year service tenet is professional, high-quality, reassuring, fast and efficient. Over the years, We focus on making good products for our customers. We are recognized by plenty of customers, and also our business all over the world.

弹簧事业部 Spring division

拥有各式压拉扭弹簧机160台和CNC弹簧机60台及检测设备20套；能精密制造各种标准和非标准压簧、拉簧、扭簧、高温弹簧（600°）&低温弹簧（-260°）、碟形弹簧（外径范围：3mm~900mm，厚度范围：0.08~60mm）、波形弹簧（外径范围：1mm~500mm，厚度范围：0.1~10mm）、热卷弹簧（材料直径16~80mm）、冷卷弹簧（材料直径：02mm~20mm）、发条、恒力弹簧（厚度范围：0.1mm~10mm）、密封弹簧（外径范围：2mm~500mm；厚度范围：0.1~10mm）螺旋叶片弹簧、阻尼器、气杆、悬架弹簧、涡卷弹簧、模具弹簧、卡簧、蛇形弹簧、异型弹簧、螺旋弹簧加工件、弹簧垫圈、孔用弹性挡圈、轴用弹性挡圈、止动环、缓冲器等精密五金。通过严格的疲劳测试实验，我们的弹簧最高耐疲劳1亿次以上。

常用材料：各类碳素钢、合金钢材料、琴钢线、Hastelloy哈氏合金、Elgiloy、SAE6150、SAE9254、50CrV4、60Si2CrA、62Si2MnA、SK4、SK5、CK55、CK67、CK70、CK75、、65Mn、SUS301、SUS304、SUS316、SUS631、17-7、InconelX-718、InconelX-750、GH145等。

表面处理：发蓝、发黑、磷化、电镀、电泳和喷塑、喷漆、达克罗、焦美特等。

We have all kinds of press-pull torsion spring machine 160 sets and CNC spring machine 60 sets and 20 sets of testing equipment; Precision manufacturing various standard and non-standard high temperature spring (600 °) & low temperature spring (-260 °) and compression spring, tension spring, torsion spring, disc springs (Outer diameter range: 1mm~500mm, thickness range: 0.1~10mm), spiral leaf spring, damper, gas pole, suspension spring, hot coil spring, constant force spring (thickness range: 0.1~10mm), Seal Spring (Outer diameter range: 2mm~500mm, thickness range: 0.1~10mm), vortex coil spring, die spring, snap ring, serpentine spring, shaped spring, screw, spring washer, hole, Axis with elastic retaining ring, stop ring, buffer and other precision hardware. Through rigorous fatigue testing experiments, our spring can withstand more than 100 million times of maximum fatigue.

Common materials: all kinds of carbon steel, alloy steel, piano steel wire, Hastelloy Hastelloy, Elgiloy, sae6150, sae9254, 50CrV4, 60Si2CrA, 62Si2MnA, SK4, SK5, CK55, CK67, CK70, CK75, 65Mn, SUS301, SUS304, SUS316, SUS631, 17-7, InconelX-718, InconelX-750, GH145, etc.

Surface treatment: bluing, blackening, phosphating, electroplating, electrophoresis and plastic spraying, painting, Dacromet, Jiaomeite, etc.

密封事业部 Seal Division

面对客户多元化需求,立足公司自有的先进弹簧的制造经验,公司于2016.6成立密封事业部,专门攻克了多家500强企业需要国产化但多年并不成功国产的泛塞封项目,帮助客户节省了大批成本。经过多年的发展,公司密封事业部现能精密制造各种弹簧储能圈,孔用泛塞封,轴用泛塞封,端面内向泛塞封,旋转泛塞封,PTFE翻唇骨架油封、翻唇式油封、格来圈、斯特封、尘封、AQ封、高压旋转油封、挡圈、导向环等各种非标定制密封产品。

本公司氟塑密封件,均采用优质PTFE树脂生产,全都具备极低的摩擦阻力、无爬行现象、自润滑性能好、在缺乏润滑的情况下仍可正常工作等出色的优点。材料的化学性能和物理性能非常稳定,耐腐蚀性能优异、不粘性突出。工作温度范围达-60°C~+250°C。同时,具有极佳的动态和静态密封特点,耐磨性好、使用寿命长。产品应用范围广泛,尤其是在高压、高温、高速的工况下,以及强酸、强碱、强腐蚀的环境中,仍能保持良好的密封性能。

Facing the diversified needs of customers and based on the company's own manufacturing experience of advanced springs, We established a seal ring business department in June 2016, which has specially conquered the pan plug sealing projects that many top 500 enterprises need to be localized but have not been successfully localized for many years, we helped them save a large number of costs. After years of development, our seal division is now able to manufacture various kinds of non-standard customized sealing products, such as spring energy storage ring, hole pan plug seal, shaft pan plug seal, end face inward pan plug seal, rotary pan plug seal, PTFE lip framework oil seal, lip type oil seal, grid ring, stern seal, dust seal, AQ seal, high pressure rotary oil seal, retaining ring, guide ring, etc.

Our fluoroplastic seals are all made of high-quality PTFE resin. They all have excellent advantages such as extremely low friction resistance, no crawling phenomenon, good self-lubricating performance, and can still work normally in the absence of lubrication. The chemical and physical properties of the material are very stable, with excellent corrosion resistance and outstanding non stickiness. The working temperature ranges from -60 °C to +250 °C. At the same time, it has excellent dynamic and static sealing characteristics, good wear resistance and long service life. Products are widely used, especially in high pressure, high temperature, high speed conditions, as well as strong acid, strong alkali, strong corrosion environment, still can maintain good sealing performance.

五金制冷事业部 Hardware Refrigeration Division

拥有各类先进的精密五金制冷加工设备,主导产品包括过滤器(干燥过滤器,吸气过滤器)单向阀,空调阀,黄铜及紫铜等制冷配件系类产品 and 精密五金系列配件。

We have all kinds of advanced precision hardware refrigeration processing equipment, leading products include filter (dry filter, suction filter) check valve, air conditioning valve, brass and copper and other refrigeration accessories series products and precision hardware series accessories.



种类TYPE

恒力弹簧
CONSTANT FORCE
SPRING

涡卷弹簧
COIL SPRING

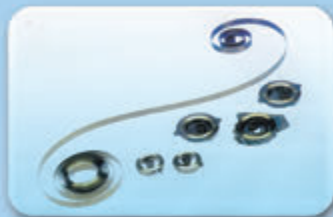
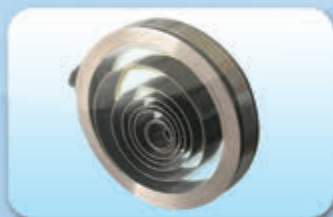
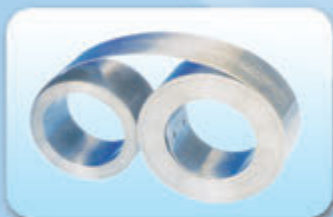
碳刷弹簧
BRUSH SPRING

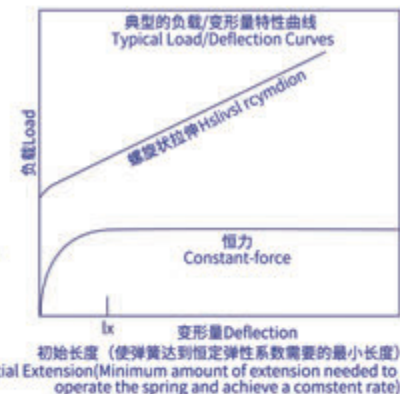
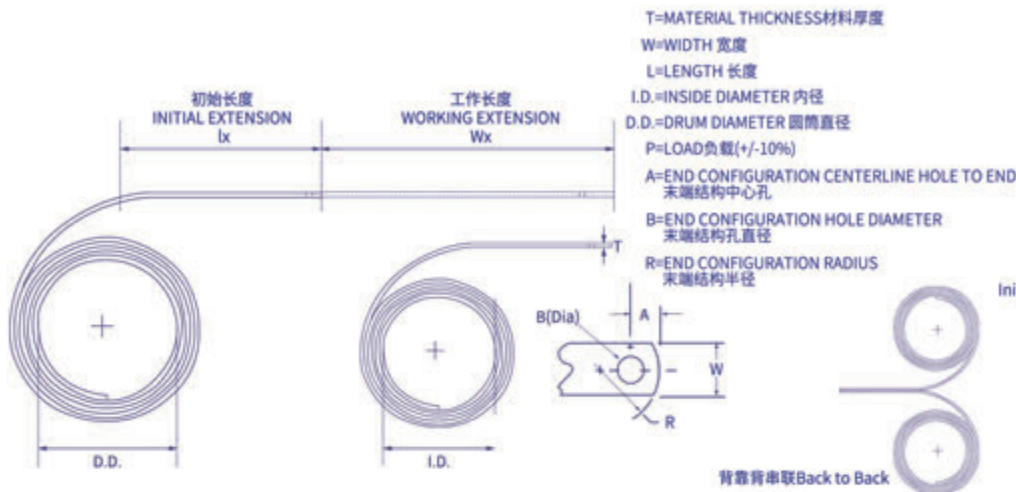
塔形弹簧
TOWER SPRING

用SUS301不锈钢和62Si2MnA、SK4、SK5碳钢等原材料，厚度0.10mm-10.0mm，层数为1-3层的各种收线类发条、恒力发条、游丝发条，恒力弹簧、涡卷弹簧，发条、定时器发条、升降发条、回卷发条、油锯发条、伸宿发条、玩具发条 卷尺发条、平衡器(机)发条、健身器发条、不锈钢发条、统机走闹条、机械发条、电风扇升降发条、玩具发条、汽车安全带发条、发动机启动发条、电线拉线发条、耳机收线发条、电刷发条、自动售货机发条音乐发条、电话线发条、电熨斗发条、电饭煲发条、吸尘器发条等。

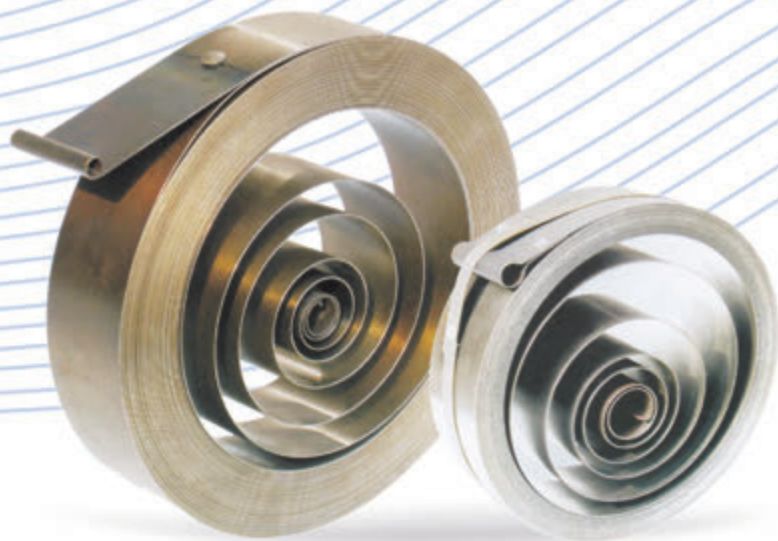
主要应用于各种汽车、电子电器、马达、玩具、仪表仪器、电力机械、环保除尘设备、起动机械设备、压缩机等工业领域。

SUS301 stainless steel, 62si2mna, SK4, SK5 carbon steel and other raw materials are used. The thickness is 0.10 mm-10.0 mm, and the number of layers is 1-3. All kinds of take-up spring, constant force spring, hairspring, constant force spring, scroll spring, spring, timer spring, lifting spring, rewinding spring, chain saw spring, extension spring, toy spring, tape spring, balancer spring, fitness spring, etc Stainless steel spring, machine running spring, mechanical spring, electric fan lifting spring, toy spring, automobile safety belt spring, engine starting spring, wire pulling spring, earphone winding spring, brush winding, vending machine winding, music winding, telephone winding, iron winding, rice cooker winding, vacuum cleaner winding, etc. It is mainly used in all kinds of automobile, electronic appliances, motors, toys, instruments, electric machinery, environmental protection dust removal equipment, starting machinery, compressors and other industrial fields.





编号 Part No.	厚度 (T) Thickness (T)		宽度 (W) Width (W)		Length (L) 长度 (L)		Initial Extension (lx) 初始长度 (lx)		Working Extension (Wx)Max 工作长度 (Wx)最大		Inside Diameter (I.D.) 内径 (I.D.)		Drum Diameter 圆筒直径		Load (P) ±10% 负载 (P) ±10%		End Configuration 末端结构						Fatigue LifeCycles 疲劳寿命
	in	mm	in	mm	in	mm	in	mm	in	mm	in	mm	in	mm	in	mm	in	mm	in	mm	in	mm	
YF03050165	0.003	0.08	0.187	4.75	12	305	0.50	12.70	9	229	0.21	5.33	0.25	6.35	0.37	1.65	3/8	9.5	0.130	3.3	1/2	12.7	2500
YF03810218	0.004	0.10	0.187	4.75	15	381	0.61	15.49	12	305	0.29	7.37	0.34	8.64	0.49	2.18	3/8	9.5	0.130	3.3	1/2	12.7	2500
YF03810294	0.004	0.10	0.250	6.35	15	381	0.61	15.49	12	305	0.25	6.35	0.30	7.62	0.66	2.94	3/8	9.5	0.130	3.3	1/2	12.7	2500
YF04320458	0.005	0.13	0.312	7.92	17	432	0.75	19.05	14	356	0.37	9.40	0.44	11.18	1.03	4.58	3/8	9.5	0.130	3.3	1/2	12.7	2500
YF06100658	0.006	0.15	0.375	9.53	24	610	0.92	23.37	20	508	0.45	11.43	0.54	13.72	1.48	6.58	3/8	9.5	0.130	3.3	1/2	12.7	2500
YF06350876	0.006	0.15	0.500	12.70	25	635	0.92	23.37	21	533	0.45	11.43	0.54	13.72	1.97	8.76	3/8	9.5	0.200	5.1	1/2	12.7	2500
YF07620117	0.008	0.20	0.500	12.70	30	762	1.22	30.99	25	635	0.59	14.99	0.70	17.78	2.63	11.70	3/8	9.5	0.190	4.7	1/2	12.7	2500
YF07621463	0.008	0.20	0.625	15.88	30	762	1.22	30.99	25	635	0.61	15.49	0.73	18.42	3.29	14.63	3/8	9.5	0.200	5.1	1/2	12.7	2500
YF06101779	0.008	0.20	0.750	19.05	24	610	1.22	30.99	20	508	0.61	15.49	0.73	18.42	4.00	17.79	3/8	9.5	0.190	4.7	3/4	19.1	2500
YF08382202	0.010	0.25	0.750	19.05	33	838	1.53	38.86	27	686	0.71	18.03	0.85	21.59	4.95	22.02	3/8	9.5	0.190	4.7	3/4	19.1	2500
YF09912642	0.012	0.30	0.750	19.05	39	991	1.84	46.74	32	813	0.88	22.35	1.00	25.40	5.94	26.42	3/8	9.5	0.190	4.7	3/4	19.1	2500
YF09913523	0.012	0.30	1.000	25.40	39	991	1.84	46.74	32	813	0.88	22.35	1.00	25.40	7.92	35.23	3/8	9.5	0.190	4.7	3/4	19.1	2500
YF10164715	0.016	0.41	1.000	25.40	40	1016	2.21	56.13	33	838	1.20	30.48	1.40	35.56	10.60	47.15	3/8	9.5	0.200	5.1	1/2	12.7	2500
YF12700734	0.020	0.51	1.250	31.75	50	1270	2.82	71.63	43	1092	1.47	37.34	1.75	44.45	16.50	73.40	3/8	9.5	0.200	5.1	1/2	12.7	2500
YF03810222	0.004	0.10	0.250	6.35	15	381	0.61	15.49	12	305	0.34	8.64	0.40	10.16	0.50	2.22	3/8	9.5	0.131	3.3	1/2	12.7	4000
YF04570334	0.005	0.13	0.310	7.87	18	457	0.75	19.05	15	381	0.42	10.67	0.50	12.70	0.75	3.34	3/8	9.5	0.131	3.3	1/2	12.7	4000
YF05590498	0.006	0.15	0.370	9.40	22	559	0.92	23.37	18	457	0.51	12.95	0.62	15.75	1.12	4.98	3/8	9.5	0.131	3.3	1/2	12.7	4000
YF06600721	0.007	0.18	0.500	12.70	26	660	1.06	26.92	21	533	0.59	14.99	0.75	19.05	1.62	7.21	3/8	9.5	0.131	3.3	1/2	12.7	4000
YF07621054	0.008	0.20	0.590	14.99	30	762	1.22	30.99	24	610	0.68	17.27	0.87	22.10	2.37	10.54	3/8	9.5	0.187	4.7	3/4	19.1	4000
YF08641557	0.010	0.25	0.680	17.27	34	864	1.53	38.86	27	686	0.85	21.59	1.00	25.40	3.50	15.57	3/8	9.5	0.187	4.7	3/4	19.1	4000
YF09652224	0.012	0.30	0.810	20.57	38	965	1.84	46.74	30	762	1.02	25.91	1.25	31.75	5.00	22.24	3/8	9.5	0.187	4.7	3/4	19.1	4000
YF10923114	0.014	0.36	1.000	25.40	43	1092	2.14	54.36	33	838	1.19	30.23	1.50	38.10	7.00	31.14	3/8	9.5	0.187	4.7	3/4	19.1	4000
YF04570102	0.004	0.10	0.250	6.35	18	457	0.62	16.00	15	381	0.53	13.45	0.59	14.98	0.23	1.02	3/8	9.5	0.130	3.3	1/2	12.7	25000
YF06350191	0.005	0.13	0.380	9.52	25	635	0.78	20.00	22	558	0.65	16.50	0.73	18.53	0.43	1.91	3/8	9.5	0.130	3.3	1/2	12.7	25000
YF06350231	0.006	0.15	0.380	9.52	25	635	0.90	23.00	21	533	0.77	19.55	0.86	21.83	0.52	2.31	3/8	9.5	0.200	4.9	1/2	12.7	25000
YF06350311	0.006	0.15	0.500	12.69	25	635	0.92	23.00	21	533	0.80	20.31	0.90	22.85	0.70	3.11	3/8	9.5	0.200	4.9	1/2	12.7	25000
YF08380414	0.008	0.20	0.500	12.69	33	838	1.23	31.00	28	711	1.07	27.16	1.20	30.46	0.93	4.14	3/8	9.5	0.200	4.9	1/2	12.7	25000
YF08880649	0.010	0.25	0.630	15.87	35	888	1.53	39.00	29	736	1.36	34.52	1.52	38.58	1.46	6.49	3/8	9.5	0.200	4.9	1/2	12.7	25000
YF11420929	0.012	0.30	0.750	19.04	45	1142	1.82	46.00	38	965	1.60	40.62	1.79	45.44	2.09	9.29	3/8	9.5	0.200	4.9	1/2	12.7	25000
YF11421245	0.012	0.30	1.000	25.38	45	1142	1.84	47.00	38	965	1.60	40.62	1.79	45.44	2.80	12.45	3/8	9.5	0.200	4.9	1/2	12.7	25000
YF12181556	0.015	0.38	1.000	25.38	48	1218	2.20	56.00	39	990	1.96	49.75	2.20	55.85	3.50	15.56	3/8	9.5	0.200	4.9	1/2	12.7	25000
YF11681823	0.016	0.41	1.000	25.38	46	1168	2.21	56.00	37	939	1.96	49.75	2.20	55.85	4.10	18.23	3/8	9.5	0.200	4.9	1/2	12.7	25000
YF12181943	0.015	0.38	1.250	31.73	48	1218	2.29	58.00	39	990	2.03	51.53	2.27	57.62	4.37	19.43	3/8	9.5	0.200	4.9	1/2	12.7	25000
YF13962592	0.020	0.51	1.250	31.73	55	1396	2.82	72.00	43	1092	2.53	64.22	2.83	71.84	5.83	25.92	3/8	9.5	0.200	4.9	1/2	12.7	25000
YF05333114	0.006	0.15	0.370	9.40	21	533	2.03	51.56	12	305	1.13	28.70	1.36	34.54	0.25	1.11	3/8	9.5	0.131	3.3	1/2	12.7	40000
YF06353115	0.007	0.18	0.500	12.70	25	635	2.36	59.94	15	381	1.31	33.27	1.58	40.13	0.37	1.65	3/8	9.5	0.131	3.3	1/2	12.7	40000
YF07623116	0.008	0.20	0.590	14.99	30	762	2.72	69.09	18	457	1.51	38.35	1.81	45.97	0.50	2.22	3/8	9.5	0.187	4.7	3/4	19.1	40000
YF09143117	0.010	0.25	0.680	17.27	36	914	3.38	85.85	21	533	1.88	47.75	2.26	57.40	0.75	3.34	3/8	9.5	0.187	4.7	3/4	19.1	40000
YF10673118	0.012	0.30	0.810	20.57	42	1067	4.07	103.40	24	610	2.26	57.40	2.71	68.83	1.12	4.98	3/8	9.5	0.187	4.7	3/4	19.1	40000
YF12193119	0.014	0.36	1.000	25.40	48	1219	4.74	120.40	27	686	2.63	66.80	3.16	80.26	1.62	7.21	3/8	9.5	0.187	4.7	3/4	19.1	40000



由于牵狗器弹簧是非标类产品，相同的形状有不同的尺寸，敏硕可定制厚度为0.06-0.7mm，宽度2-50mm尺寸的牵狗器弹簧；您也可提供图纸或数据（弹簧厚度、宽度、工作长度、内径、外径），客服人员即可为您提供报价和定制周期，欢迎咨询。

As the dog puller spring is a non-standard product, the same shape has different sizes. Mascot can customize the dog puller spring with the thickness of 0.06-0.7mm and the width of 2-50mm; You can also provide drawings or data (spring thickness, width, working length, inner diameter, outer diameter), customer service personnel can provide you with quotation and customization cycle, welcome to consult.

用途

APPLICATIONS

主要用于牵狗器带/绳的拉出回收。

It is mainly used for pulling out and recycling the dog leash.



性能特点

FEATURES

碳钢材料，高端牵狗器的标配，力度柔和持久，寿命长。生产流程成熟稳定高效，性价比高。

Carbon steel material, standard configuration of high-end dog puller, soft and durable strength, long service life. The production process is mature, stable, efficient and cost-effective.





由于窗帘弹簧是非标类产品，相同的形状有不同的尺寸，敏硕可定制；您可提供图纸或数据（弹簧厚度、宽度、工作长度、内径、外径），客服人员即可为您提供报价和定制周期，欢迎咨询。

As the curtain spring is a non-standard product, the same shape has different sizes, minshuo can be customized; You can provide drawings or data (spring thickness, width, working length, inner diameter, outer diameter), customer service staff can provide you with quotation and customization cycle, welcome to consult.

用途

APPLICATIONS

窗帘弹簧专指应用在窗帘上的定力弹簧,因为利用了定力弹簧的力变化很小的特点,可以方便的调整窗帘的高低,让窗帘停在理想的高度。

Curtain spring is a force spring applied to curtain, because the force of the force spring changes very small, can easily adjust the curtain height, so that the curtain stops at the ideal height.



性能特点

FEATURES

- 全程恒力，也可以部分弹簧段变力
- 弹簧材质选用优质不锈钢
- 使用寿命长

- Constant force in the whole process, or variable force in some spring segments
- The spring is made of high quality stainless steel
- Long service life

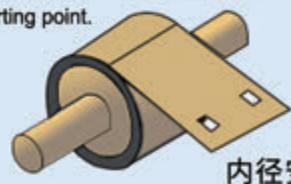


安装

INSTALLATION

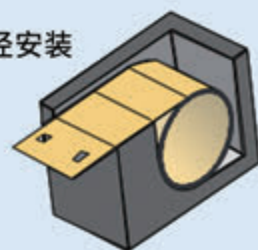
窗帘弹簧的安装方式分为两种，内径安装和外径安装，内径安装需要将发条固定在一根轴上，外径安装则是需要把发条固定在固定的容器里，外端在外力的作用下做直线运动，当外力消失后，窗帘发条的回弹力会带着我们的目标回到指定的起点。

There are two ways to install the curtain spring, the inner diameter installation and the outer diameter installation. The inner diameter installation needs to fix the spring on a shaft, and the outer diameter installation needs to fix the spring in a fixed container. The outer end moves in a straight line under the action of the external force. When the external force disappears, the resilience of the curtain spring will bring our goal back to the designated starting point.



内径安装

外径安装





MASCOT 升降弹簧 LIFTING SPRING

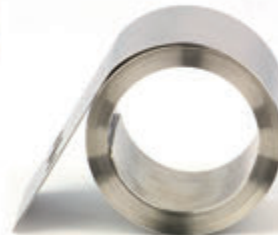
由于升降弹簧是非标类产品，相同的形状有不同的尺寸，敏硕可定制；您可提供图纸或数据（弹簧厚度、宽度、工作长度、内径、外径），客服人员即可为您提供报价和定制周期，欢迎咨询。

As the lifting spring is a non-standard product, the same shape has different sizes, MASCOT can be customized; You can provide drawings or data (spring thickness, width, working length, inner diameter, outer diameter), customer service staff can provide you with quotation and customization cycle, welcome to consult.

用途 APPLICATIONS

升降弹簧是定力弹簧的一种，专指应用在风扇、显示屏、门窗等上面的弹簧，借助弹簧的拉力，可以自由调节其高低。

Lifting spring is a kind of constant force spring, which is specially applied to fans, display screens, doors and windows. With the help of spring tension, its height can be freely adjusted.



性能特点 FEATURES

- 恒力弹簧，可多个串联实现不同的力值，有限空间足够大的力和足够长的使用寿命
- 特殊的冷拉工艺，力度稳定，无衰减；特殊的润滑工艺，噪音更低
- Constant force spring, can be connected in series to achieve unreasonable force value, large enough force in
- Special cold drawing process, stable strength, no attenuation; Special lubrication technology, lower noise

MASCOT 安全带弹簧 SAFETY BELT SPRING

由于安全带弹簧是非标类产品，相同的形状有不同的尺寸，敏硕可定制；您可提供图纸或数据（弹簧厚度、宽度、工作长度、内径、外径），客服人员即可为您提供报价和定制周期，欢迎咨询。

As the seat belt spring is a non-standard product, the same shape has different sizes, Mascot can be customized; You can provide drawings or data (spring thickness, width, working length, inner diameter, outer diameter), customer service staff can provide you with quotation and customization cycle, welcome to consult.

用途

APPLICATIONS

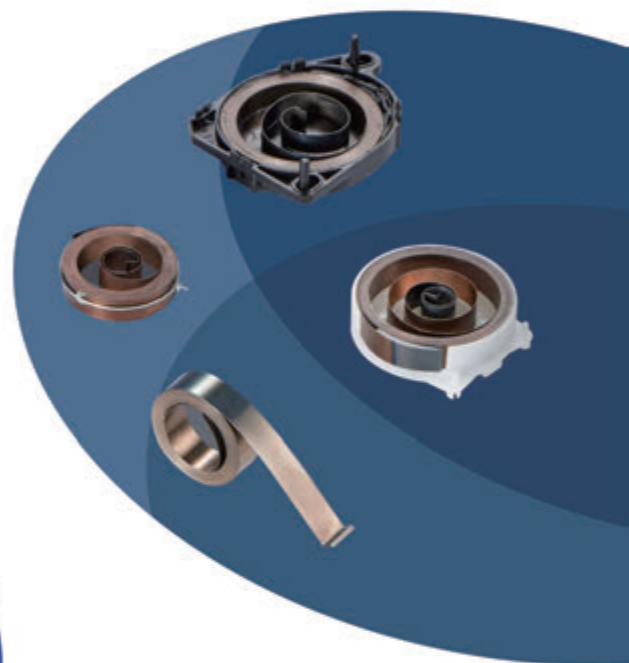
主要应用于汽车安全带。

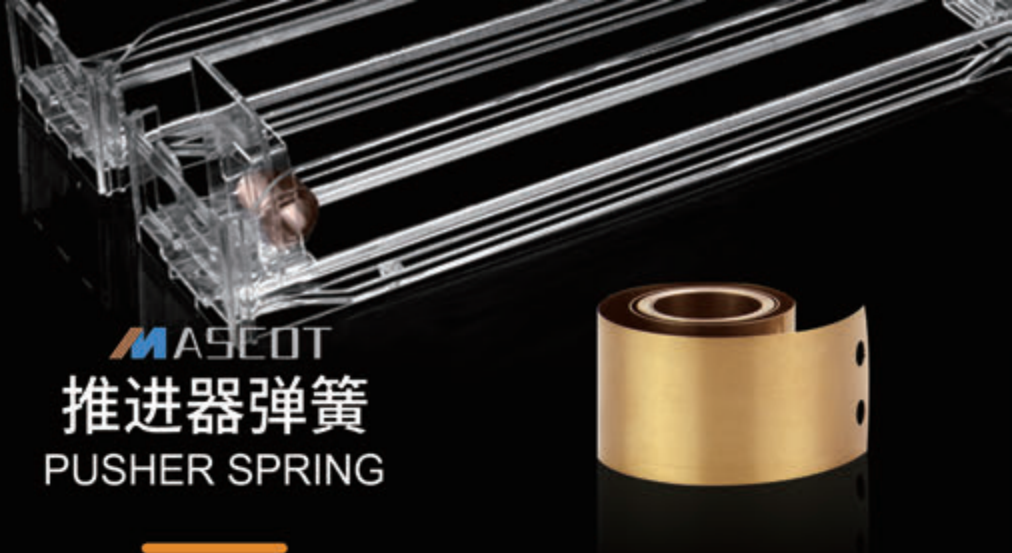
It is mainly used in automobile safety belt.

性能特点

FEATURES

- 材料稳定，性能稳定，性价比高，使用寿命长。
- Stable material, stable performance, high cost performance and long service life.





由于推进器弹簧是非标类产品，相同的形状有不同的尺寸，敏硕可定制；您可提供图纸或数据（弹簧厚度、宽度、工作长度、内径、外径），客服人员即可为您提供报价和定制周期，欢迎咨询。

As the seat belt spring is a non-standard product, the same shape has different sizes, Mascot can be customized; You can provide drawings or data (spring thickness, width, working length, inner diameter, outer diameter), customer service staff can provide you with quotation and customization cycle, welcome to consult.

用途

APPLICATIONS

推进器弹簧是定力弹簧应用的一种，主要应用在卖场的货架、展示架上，其同普通货架的区别在于：当顾客拿走摆放在货架、展示架上的第一个货物时，弹簧的拉力会让摆放在后面的货物自动往前移动，避免因货物取走后留下空位，必须有专人去摆放货物补位。

Propeller spring is a kind of force spring application, mainly applied to the shelves and display shelves in the selling field. The difference between them and ordinary shelves is that when the customer takes the first goods placed on the shelf and display shelf, the spring tension will make the goods placed in the back move forward automatically, so as to avoid leaving a space after the goods are removed, and special personnel must be assigned to place the goods for filling.



性能特点

FEATURES

不锈钢 无衰减
Stainless steel without attenuation



启动弹簧 STARTER SPRING

由于启动弹簧是非标类产品，相同的形状有不同的尺寸，敏硕可定制；您可提供图纸或数据（弹簧厚度、宽度、工作长度、内径、外径），客服人员即可为您提供报价和定制周期，欢迎咨询。

As the seat belt spring is a non-standard product, the same shape has different sizes, Mascot can be customized; You can provide drawings or data (spring thickness, width, working length, inner diameter, outer diameter), customer service staff can provide you with quotation and customization cycle, welcome to consult.



用途

APPLICATIONS

主要应用于园林机械等的汽油机启动

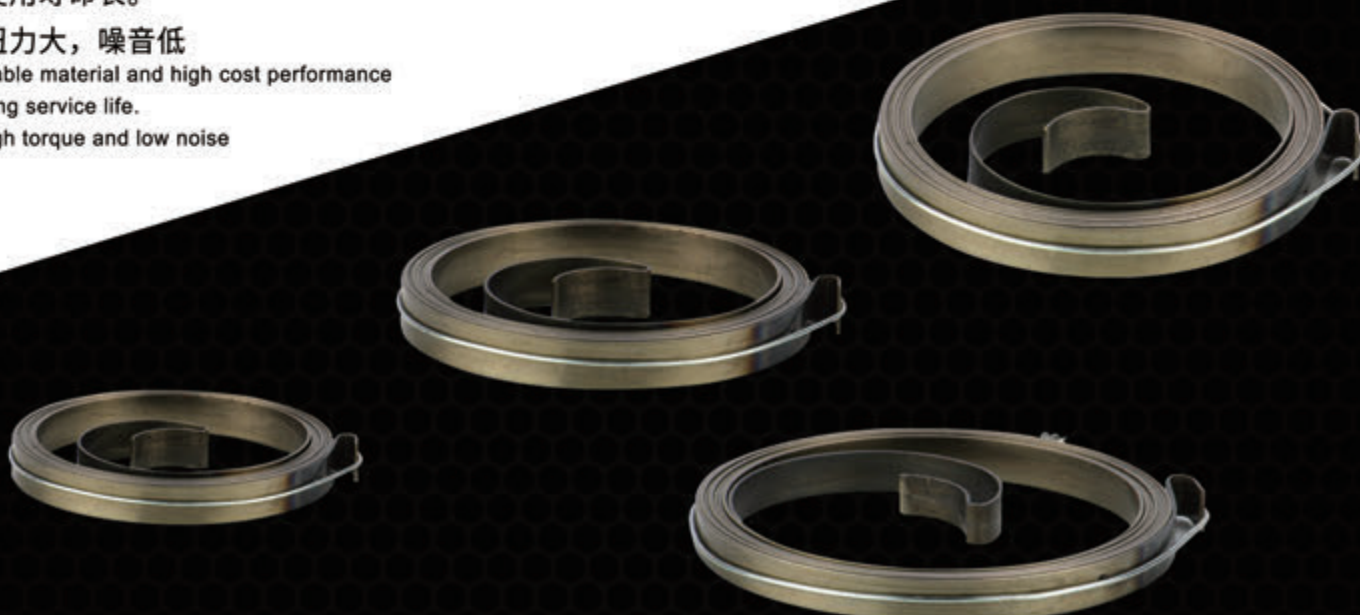
It is mainly used to start the gasoline engine of garden machinery



性能特点

FEATURES

- 材料稳定，性价比高
- 使用寿命长。
- 扭力大，噪音低
- Stable material and high cost performance
- Long service life.
- High torque and low noise



MASCOT 重力大弹簧 GRAVITY BIG SPRING

重力大弹簧是涡卷弹簧应用的一种，又叫动力弹簧，其作用是当我们把线从固定线的专用盒子里拉出来后，利用弹簧的拉力让线能自动收回到盒子里，使用上需有弹簧盒限制其外径，弹簧的中心与动力轴相接，当线拉出时能使轴与弹簧产生相对旋转，弹簧会卷于动力轴上并储存动能，当外力消失后，弹簧便产生扭力驱动动力轴，使线又能收回到盒子时里。

Gravity spring is a kind of scroll spring application, also known as power spring. Its function is that when we pull the wire out of the special box for fixing the wire, the tension of the spring is used to make the wire automatically retract back into the box. In use, a spring box is needed to limit its outer diameter. The center of the spring is connected with the power shaft. When the wire is pulled out, the shaft and the spring can rotate relative to each other. The spring will roll on the power shaft and store kinetic energy. When the external force disappears, the spring will generate torque to drive the power shaft, so that the line can be retracted back into the box.

用途

APPLICATIONS

主要应用于各类卷管器。

It is mainly used in various types of coil.



性能特点

FEATURES

弹簧厚且宽，弹力非常大，需要弹簧盒、铁圈或胶带固定材料稳定、工艺稳定、产品稳定

The spring is thick and wide, and its elasticity is very large. It needs spring box, iron ring or adhesive tape to fix

Material stability, process stability and product stability

重力大弹簧固定方式

MOUNTING WAY

重力大弹簧会用一个密封的圆圈（铁丝或胶带）固定，使用上外端固定在盒子上，中间装在一个轴上，当轴和盒子产生圆周运动时，弹簧会储存能量，当外力消失后，弹簧储存的弹力会反向驱动，产生旋转，而且圈数也会与正向旋转的一样。

The large gravity spring will be fixed with a sealed circle (wire or tape). The upper and outer ends of the spring will be fixed on the box, and the middle of the spring will be installed on an axis. When the axis and the box produce circular motion, the spring will store energy. When the external force disappears, the stored elastic force of the spring will drive backward and produce rotation, and the number of turns will be the same as the positive rotation.



盒固定
Box fixation



铁圈固定
Iron ring fixation



胶带固定
Tape fixation

MASCOT

通用恒力弹簧

UNIVERSAL CONSTANT FORCE SPRING



用途

APPLICATIONS

主要用途最为广泛，如电器的电源线回收，各种带子的拉出回收装置等。

The main use of the most extensive, such as electrical power cord recycling, a variety of tape pull out recycling device.



性能特点

FEATURES

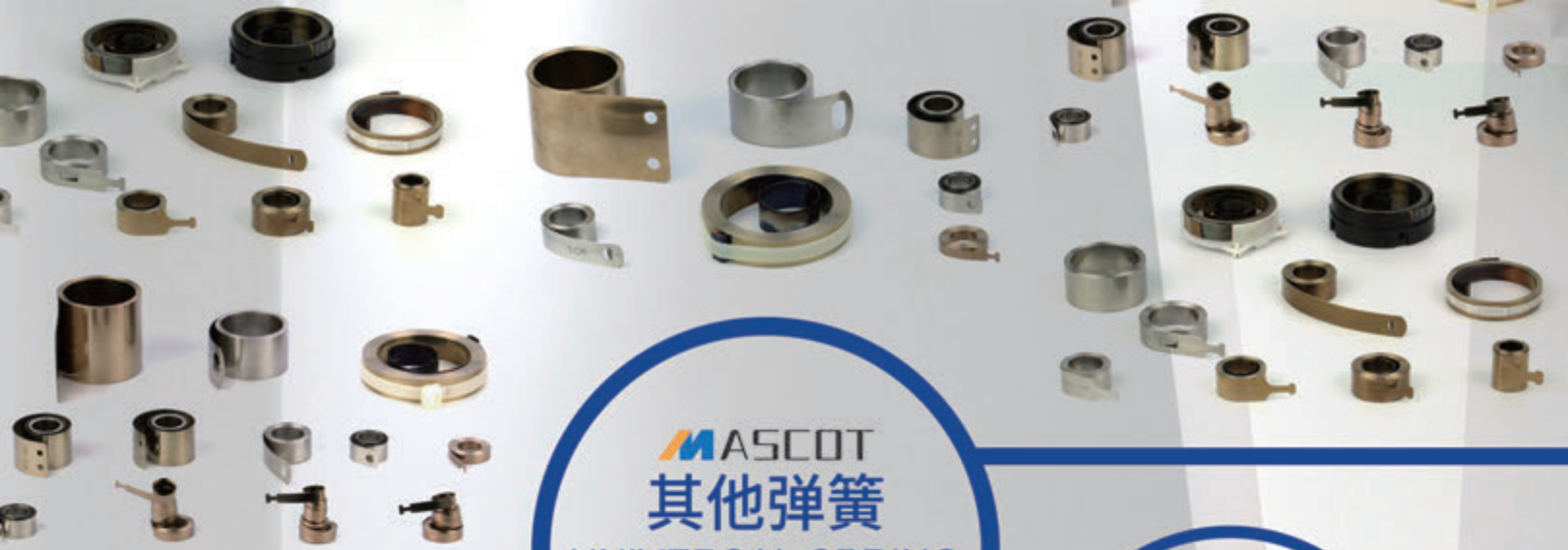
种类繁多形式各异，力度越平稳越好，寿命越长越好；材料来源稳定，生产效率高，产品性价比高。

The more stable the strength, the better the life; Stable material source, high production efficiency and high cost performance of products.

☎ 400-008-3858

🌐 www.mascotspring.com

✉ sales@mascotspring.com



ASCOT
其他弹簧
UNIVERSAL SPRING

类别

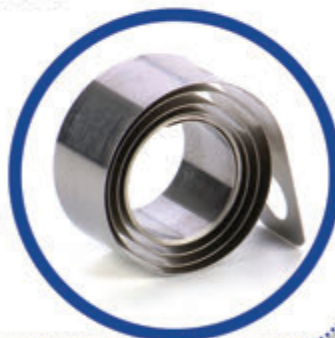
CATEGORY



订书机弹簧、电缆弹簧、玩具弹簧、碳刷弹簧、塔形弹簧
Stapler spring, cable spring, toy spring, carbon brush spring, tower spring

订书机弹簧STAPLER SPRING

自动推进、行程无限制
Automatic propulsion, unlimited travel



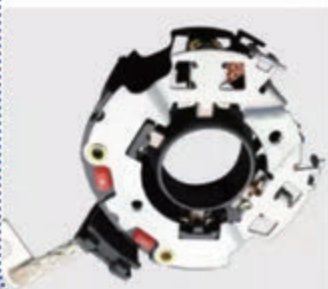
电缆弹簧CABLE SPRING

无磁、不锈钢、无衰减
No magnetism, stainless steel, no attenuation



碳刷弹簧BRUSH SPRING

力恒定、无衰减
Constant force without attenuation



玩具弹簧TOY SPRING

自动储能形成较多圈数
Automatic energy storage forms more turns





公司公众号
WeChat Subscription



公司微信
WeChat



公司网站
Website

敏硕科技（江苏）有限公司

地址：江苏省太仓新区发达路161号
网址：www.mascotspring.com

电话：86512-53985968
电子邮箱sales@mascotspring.com

上海敏硕机电科技有限公司

地址：上海市嘉定区联星路58号
电话：8621-50281392

敏硕科技（浙江）有限公司

地址：浙江绍兴诸暨华海路
电话：400-008-3858

敏硕科技（天津）有限公司

地址：天津市南开区梅苑路5号
电话：400-008-3858

Mascot Industrial(Jiangsu)Co.,Ltd

Address: No.161, Fada Road, Taicang New District, Jiangsu Province

website: www.mascotspring.com Tel: 86512-53985968 E-mail:sales@mascotspring.com

Shanghai Mascot Industrial Co.,Ltd

Address: 58 Lianxing Road,
Jiading District, Shanghai
Tel: 8621-50281392

Mascot Industrial(Zhejiang)Co.,Ltd

Address: Huahai Road, Zhuji ,
Shaoxing city, Zhejiang Province
Tel: 400-008-3858

Mascot Industrial(Tianjin)Co.,Ltd

Address: No.5, Meiyuan Road,
Nankai District, Tianjin
Tel: 400-008-3858